



Welcome

to the

95th Street Terminal Improvement Project Public Hearing

The purpose of this Public Hearing is to solicit comments from the community about the Environmental Assessment prepared for the 95th Street Terminal Improvement Project.





Stay Involved

To provide official comments tonight, pre-register at the Registration Table to provide testimony (public or private) here this evening or fill out a comment card and place it in the box provided.

In addition, comments will be accepted by any method listed below until 4:00 PM on Thursday, March 21, 2013

 **Mail:**

Chicago Transit Authority
Attn: **95th Terminal Improvement Project**
567 W. Lake Street
Chicago, IL 60661-1465

 **Email:**

95thTerminal@transitchicago.com

 A copy of the draft Environmental Assessment (EA) can be found on the project website at www.Transitchicago.com/95thTerminal



What is the 95th Street Terminal Improvement Project?

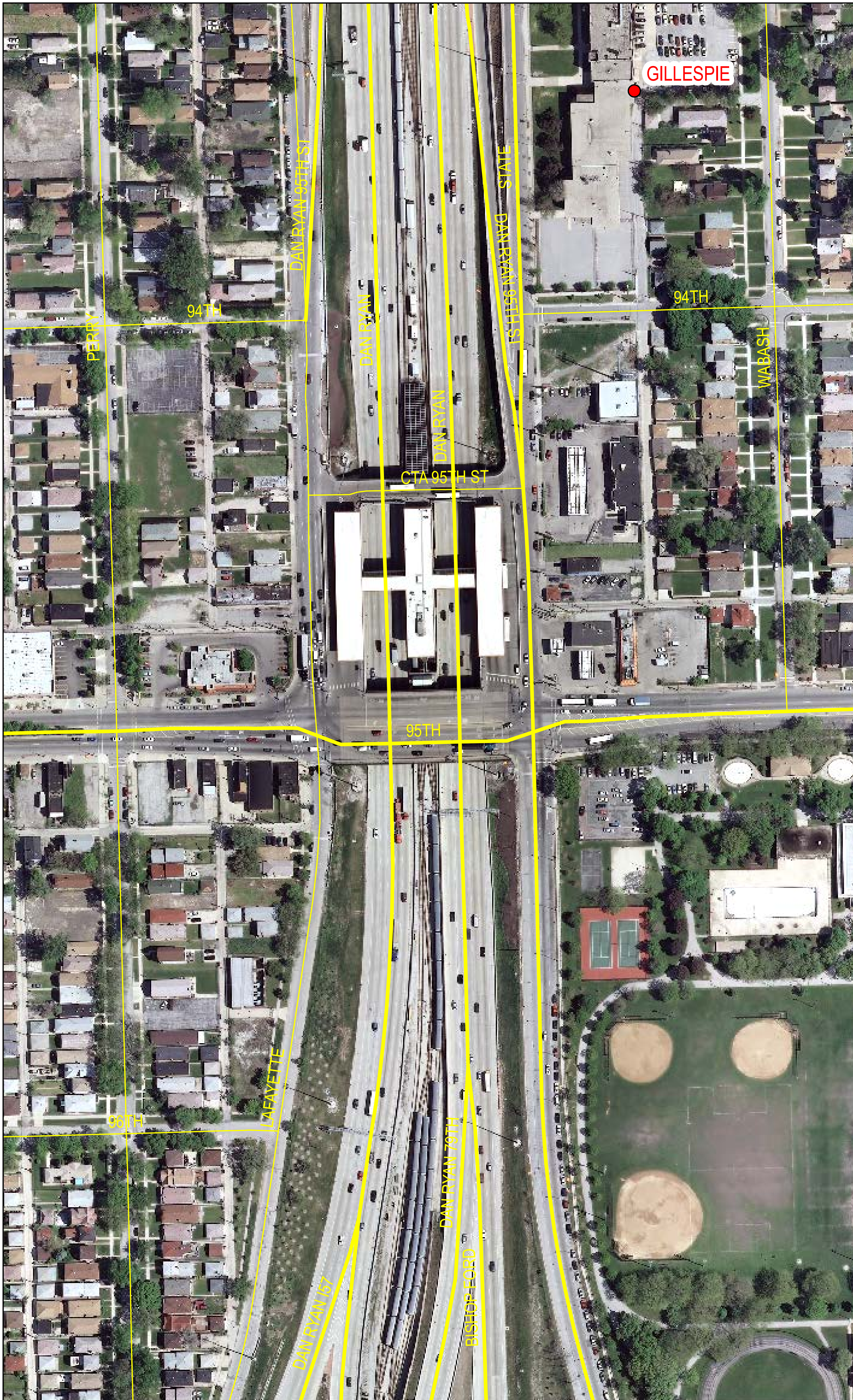
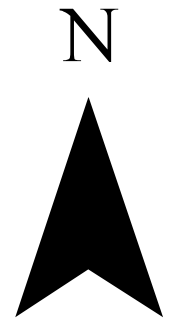
The 95th Street Terminal Improvement project includes the following scope elements:

- 🚊 Two new station houses fronting along 95th Street
- 🚊 A new Terminal south of 95th Street
- 🚊 Renovation/expansion of the existing Terminal north of 95th Street
- 🚊 A pedestrian bridge spanning across 95th Street
- 🚊 An expanded rail platform
- 🚊 Wider bus lanes and increased bus spacing
- 🚊 Wider sidewalks and customer waiting areas
- 🚊 New bus canopies
- 🚊 Additional elevators, escalators and stairs
- 🚊 Additional retail amenities
- 🚊 Additional space surrounding ticketing and fare gates
- 🚊 Acquisition of land to the east of the existing Terminal as required for construction staging and activities





Existing Terminal





Purpose and Need

What is the purpose of this project?

- ④ The purpose of the project is to improve circulation and safety for riders by relieving congestion, adding new bus bays, widening customer waiting areas, adding Terminal entrances, and providing pickup/drop-off space for disabled paratransit riders.

Why is this project needed?

- ④ The existing Terminal is over 40 years old and many elements are in a state of disrepair.
- ④ Pedestrian and bus congestion is a daily problem at the CTA's Red Line 95th Street Terminal, affecting overall performance of the facility, reducing operational efficiency, and resulting in poor customer experience.





What is an Environmental Assessment (EA)?

The EA evaluates and assesses potential impacts to the human and natural environment and historic integrity which may result from the 95th Street Terminal Improvement Project on the Red Line (“the Project”).

What is included in the EA?

- ① Description and comparison of alternatives
- ① Explanation of the existing environmental setting
- ① Analysis of potential positive and negative effects of construction and operation of each alternative
- ① Proposed mitigation measures to reduce or eliminate potential negative effects



Issues being studied in the Environmental Assessment (EA)

- Ⓜ Metropolitan Planning and Air Quality Conformity
- Ⓜ Zoning
- Ⓜ Traffic Impacts
- Ⓜ Air Quality Analysis
- Ⓜ Parklands Assessment
- Ⓜ Historic Resources
- Ⓜ Noise and Vibration
- Ⓜ Acquisitions and Relocations Required
- Ⓜ Hazardous Materials
- Ⓜ Visual Quality
- Ⓜ Community Disruption and Environmental Justice
- Ⓜ Wetlands
- Ⓜ Floodplain Impacts
- Ⓜ Water Quality, Navigable Waterways and Coastal Zones
- Ⓜ Ecologically-Sensitive Areas and Rare, Threatened or Endangered Species
- Ⓜ Impacts on Safety and Security
- Ⓜ Impacts Caused by Construction





Alternatives being considered

1) No-Build Alternative

- ⊗ No Terminal upgrades or expansions
- ⊗ No accessibility upgrades
- ⊗ Routine Terminal upkeep would proceed under normal CTA time frames
- ⊗ Does not meet the Project Purpose and Need

2) South Alternative

- ⊗ Rehabilitation of the existing Terminal and bus berths north of 95th Street
- ⊗ Construction of a new Terminal and bus berths south of 95th Street
- ⊗ Provides two new entrances along 95th Street
- ⊗ Provides a pedestrian bridge across 95th Street to allow customers to safely cross 95th Street

The South Alternative *would* meet the project purpose and needs. As a result, it was identified as the Preferred Alternative.



When will the improvements be constructed?

DRAFT PROJECT TIMELINE:

Design start:	Began February 2013
Design Complete:	Winter 2013 / 2014
Bid Period:	Spring 2014
Construction Start:	Summer 2014
Construction Complete:	End of 2016

 **Station to remain open during construction.**





Other Improvements on the CTA Red Line

- ① **North Main Line Station Renewal**
(Completed Fall 2012)
- ① **Red Line South Reconstruction.**
(May 2013 - October 2013)
- ① **Wilson Station Renewal**
(Summer 2013 - Summer 2016)
- ① **Red and Purple Line Modernization**
(pending funding)
- ① **Red Line Extension**
(pending funding)





Proposed Construction Phase Staging Site Plan



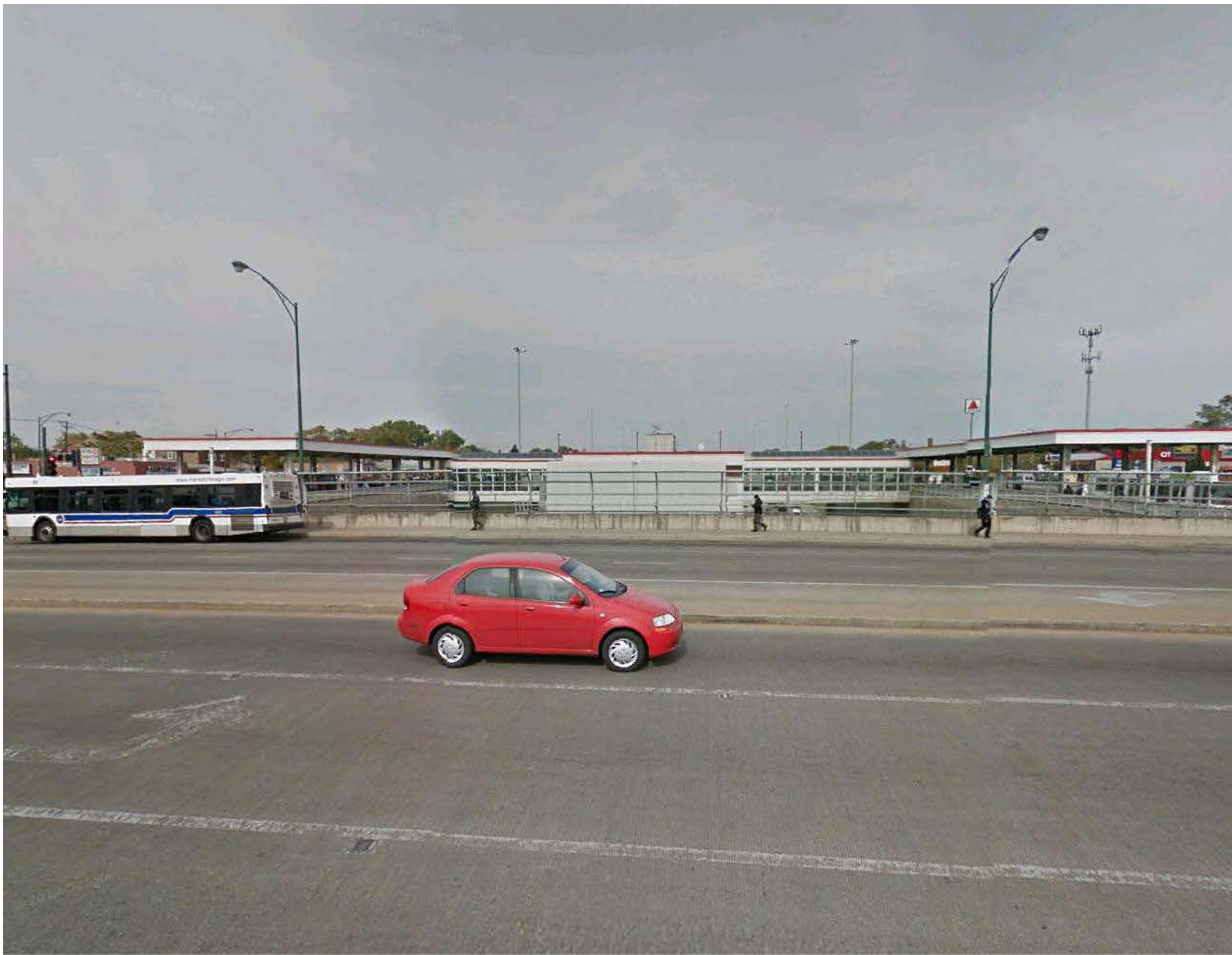


Facing East along 95th Street Bridge



Facing West along 95th Street Bridge





Facing North from 95th Street Bridge

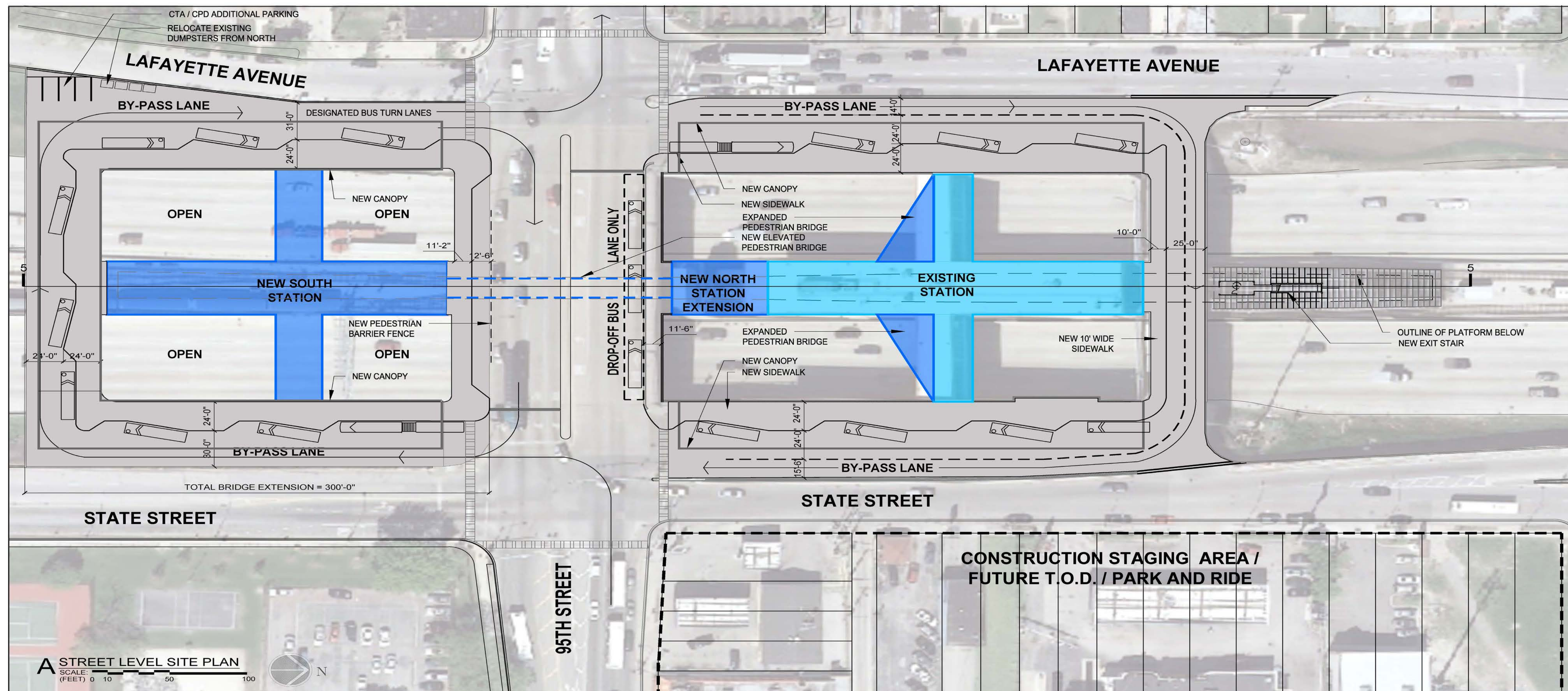


Facing South from 95th Street Bridge





Proposed Site Plan



CHICAGO TRANSIT AUTHORITY

CTP

CHICAGO TRANSIT PARTNERS

REVISIONS	
DATE	DESCRIPTION

PRELIMINARY DESIGN DRAFT

PROJECT NAME:	
95th TERMINAL SOUTH EXPANSION	
DATE:	EXHIBIT NO.
OCTOBER 10, 2012	2





Rendering of Potential Interior Terminal Design

95th Street Terminal Improvement Project

